



## Flinders View

Viewside Street, Drysdale  
Lot 106

Facade: Tide

House: 26.52 sq Land: 507 m2

4 2 3 2

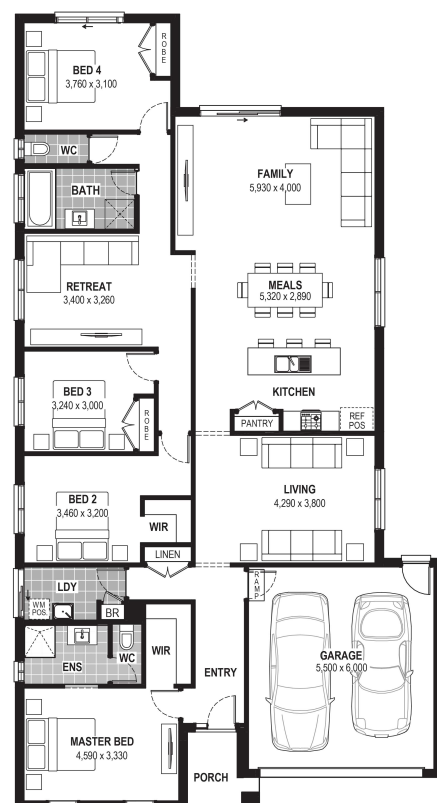
## Spice 27

### Inclusions

- Truecore Steel House Frame
- Colorbond Steel Roof (with Sarking)
- High Performance (uPVC) Double Glazed Safety Glass Windows & Doors
- 7 Star Energy Efficient to all orientations
- 7 x 440w Panels & 3KW Inverter (single phase)
- Bushfire Compliance to BAL 12.5
- 50 Year Structural Guarantee
- NCC Compliant
- Range of stylish colour schemes
- Overhead Cabinetry to Kitchen
- Tiled Shower Bases
- Laundry Cabinetry
- Remote Garage Door with Openers
- 2550mm Ceiling Height
- Developer Guidelines Included
- Laminate Flooring & Carpet Throughout
- Site Costs Allowance Included

### Contact:

Christian Keepen  
0437 853 822  
houseandland@jgking.com.au



\*Conditions apply. Speak to your New Home Advisor for further details