

HOUSE & LAND

FLINDERS VIEW ESTATE

ARDEN
HOMES

\$1,096,377*

Lot size: 444m²

Lot width: 12.59m

LAKEVILLE 35

Zepher Facade

103 Viewside Circuit
Drysdale VIC 3222



5



3



2



WHAT YOU GET

- 7 Star energy rating
- COLORBOND steel roof and panel lift garage door with remote
- 90mm Supaloc Steel Frame
- 6.6KW Solar PV System
- Zoned ducted refrigerated cooling and heating
- 2550 Ceilings to ground floor
- Complete Premium Flooring
- Double glazing to windows
- Fisher and Paykel 900mm appliances
- Soft close cabinetry throughout
- 40mm Caesarstone Mineral Island bench
- 20mm stone to rear kitchen bench, bathroom/ensuite(s)

CALL US TODAY

03 8787 1300

EMAIL US

hello@ardenhomes.com.au
Peter Brooks 0422 905 346

VISIT WEBSITE FOR MORE

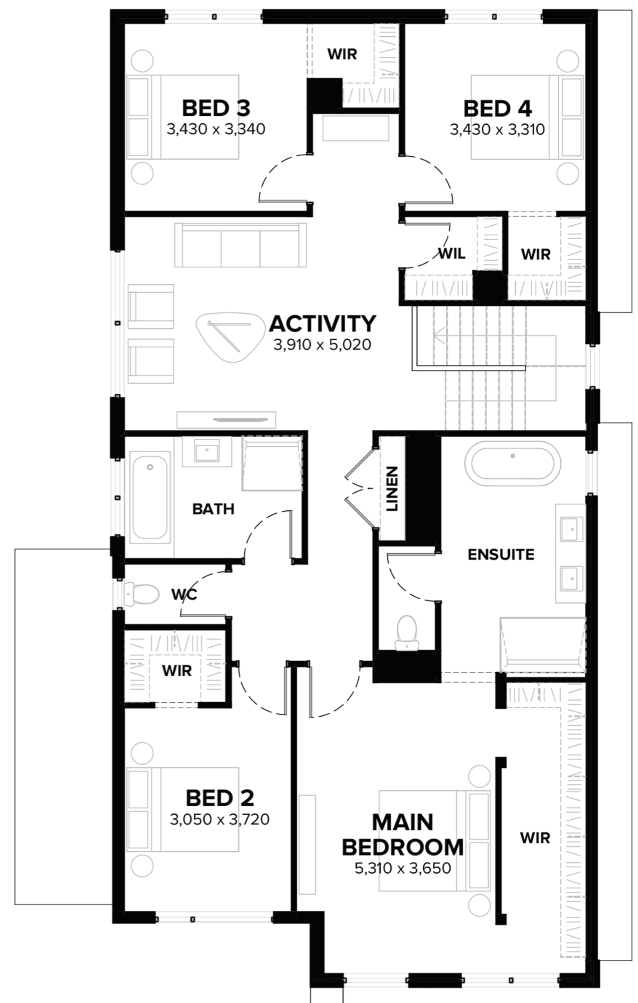
ardenhomes.com.au

CHAT TO ONE OF OUR CONSULTANTS ABOUT THIS MONTH'S OFFER

HOUSE & LAND

FLINDERS VIEW

ARDEN
HOMES



CALL US TODAY

03 8787 1300

EMAIL US

hello@ardenhomes.com.au
Peter Brooks 0422 905 346



**SCAN FOR MORE HOUSE
AND LAND PACKAGES**

TERMS & CONDITIONS: Arden Homes will provide a construction contract for the house and separately the owners will enter into a contract to purchase land directly from the landowner. This advertised offer is subject to availability, statutory approval and a successfully settled land contract. Arden Homes reserves the right to change prices or inclusions advertised without notice. For more detailed home pricing, including details about the standard inclusions for the house and optional upgrades and variations, please talk to one of our consultants. Images shown in this brochure may depict upgraded fixtures, finishes and features including items not supplied by Arden Homes such as alfresco decking, internal and external fireplaces, window and house furnishings and landscaping.